

## A Totally Flush Mount Ceiling Unit

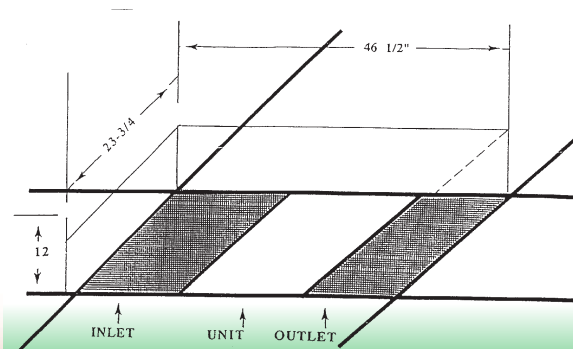
- ✓ Light weight (80 lbs total)
- ✓ Simple application (30 minutes)
- ✓ Lowest amount of head space needed (13")
- ✓ No snapping or popping
- ✓ Fits 2 x 2 or 2 x 4 ceiling tile

## Standard Features

- No Cleaning
- No Crackling or Popping
- No Ozone Produced
- No Cleaning Contract Needed

**The DC11 Unit removes smoke, dust, bacteria, etc. It helps eliminate wasted heat and air conditioning, saving hundreds or even thousands on utility bills.**

- ✓ **PRE FILTER:**  
Removes large particles such as dust, lint, hair, etc  
Replace once every 2-6 weeks.  
Once a month: Open grill, peel dirty filter off and replace with new filter, close grill
- ✓ **CHARCOAL FILTER:**  
Removes gases, odors, etc.  
Replace once a year
- ✓ **H.E.P.A. (High Efficiency Particulate Arrester)**  
Removes microscopic particles: smoke, pollen bacteria, etc.  
Replace once a year



Model DC11

## Technical Specifications

Coverage: 1 per 6 lanes  
 Filters: 1 HEPA, 1 Charcoal, 1 Prefilter  
 (12 supplied with unit – 1 year supply)  
 Weight: 85 lbs  
 Dimensions: 46 1/2" L x 12"H x 23 3/4" W  
 Cabinet: Aluminum/Luan  
 Electrical Ratings: 115V, 4.2 amps  
 8' cord supplied

\*Note: 13" clearance above drop ceiling required. Install by removing ceiling tile and dropping unit in it. Plug in or hardwire.

Distributed by:



The future is clean air ... the future is Sourcetek®

**SOURCETEC INDUSTRIES INC.**

Ontario, Canada - Ohio, USA

Tel: (905) 678-9333 Fax: (905) 678-7133

1-800-784-2383

www.sourcetekindustries.com

E-mail: sales@sourcetekindustries.com