



# **Sourcetec** **ABORT DAMPER**



*The future is clean air ... the future is **Sourcetec®***

# ABORT DAMPER



- Sourcetec Abort Damper has a fast acting damper gate release mechanism.
- Damper can be manually or automatically operated.
- Standard Damper is equipped with an electrical solenoid 110V/1/60 which needs to be energized for gate release.
- Outlet screen is standard.
- Fabricated from heavy gauge reinforced steel.
- Sourcetec Abort Damper is fully welded and shipped completely assembled.
- Whole assembly is coated with Sourcetec special coating for added protection, color can be customized.
- Recommended by NFPA Code 664 (8-4) when recycling filtered air from a wood refuse exhaust system.

## DIMENSIONS & SPECIFICATIONS

Figure 1.1: Abort Damper

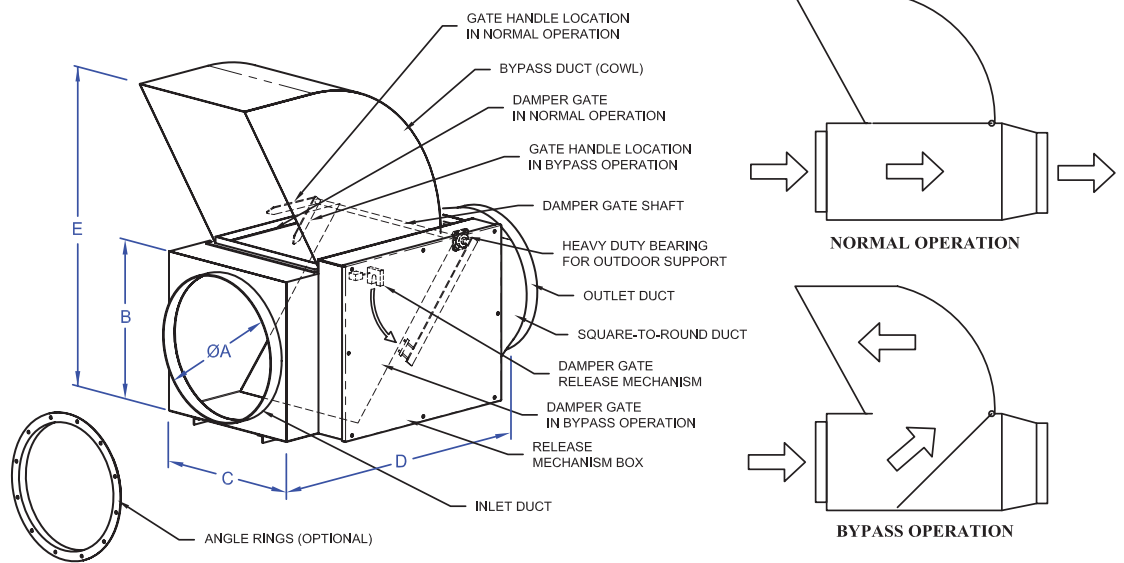


Table 1: Abort Damper

MODEL	ØA IN (mm)	B IN (mm)	C IN (mm)	D IN (mm)	E IN (mm)	WEIGHT LBS (kg) (APPROX)
AD-14	14"	16"	16"	44"	34"	125 lbs.
AD-16	16"	18"	18"	46"	38"	150 lbs.
AD-18	18"	20"	20"	48"	42"	180 lbs.
AD-20	20"	22"	22"	50"	47"	220 lbs.
AD-22	22"	24"	24"	54"	51"	270 lbs.
AD-24	24"	26"	26"	58"	57"	330 lbs.

\*Above dimensions are for reference use only. For precise dimensions please consult the factory.

\*\*Other sizes are also available upon request.

Distributed by:



The future is clean air ... the future is **Sourcetec**®

We reserve the right to change specifications without notice.

**Sourcetec Industries Inc.**

Ontario, Canada

Tel: (905) 678-9333 Fax: (905) 678-7133

1-800-784-2383

www.sourcetecindustries.com

E-mail: sales@sourcetecindustries.com