



Description

The Sourcetec Direct Drive Motor Blower DS Series are high performance direct drive multi-purpose fans. The blower is equipped with an airfoil wheel which is recognized as the most efficient fan blade design yet developed. Operating temperature of all direct fans is limited to 180°F.

Application

- Provides suction of fairly dusty air
- Ideal for exhaust, supply air and forced draft applications
- Used extensively for air conveying, including assembly and packaging operation
- Excellent for exhausting fumes and high temperature gases or air in industrial ovens

Construction

- Housing and base are fabricated from heavy gauge steel with continuous airtight weld.
- Cast aluminum wheel on sizes 8 ¾ to 10 and optional on larger sizes.

Features

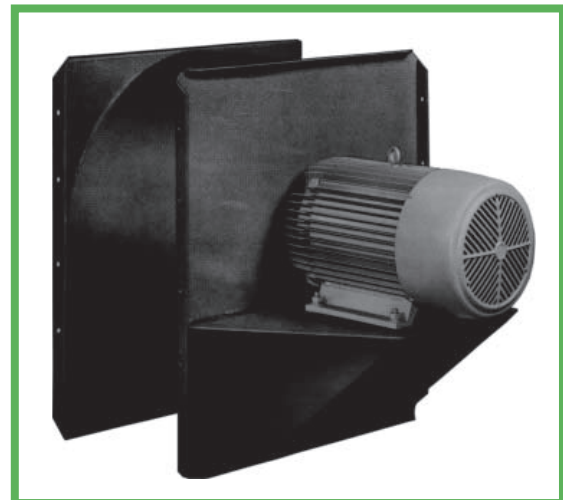
- Welded motor base with support gussets extended to the foundation flange assures solid construction stability.
- Rugged heavy gauge steel housings are fabricated with continuous airtight welds. Mounting holes are pre-punched for all discharge positions.
- Streamlined inlet assures smooth air flow and close wheel tolerances.

Capacities

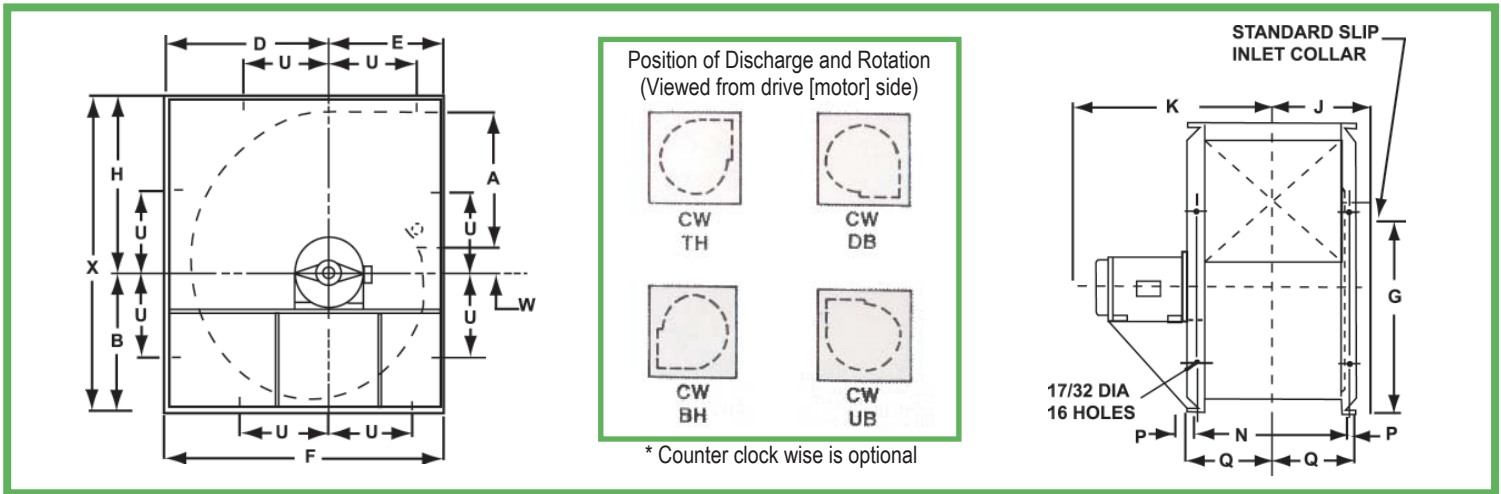
Tested and rated in accordance with codes adopted by AMCA and ASHRAE.

Rotation and Discharge

For versatility, housing can be installed on the floor, ceiling or wall in any one of four basic discharge positions.



DIMENSIONAL DATA



Fan Size	Wheel Diameter	Dimensions - Inches														
		A	B	D	E	F	G	H	J	K	N	P	Q	U	W	X
<input type="checkbox"/> DS-8	9-7/8	8-9/16	7-5/8	9-1/16	7-1/2	16-9/16	9-3/8	10-3/8	5-3/8	13-7/16	7-9/16	1-1/8	4-15/32	5-1/16	11/16	18
<input type="checkbox"/> DS-10	10-13/16	9-13/16	8-5/8	10-5/16	8-1/2	18-13/16	10-7/8	11-11/16	5-7/8	16-1/2	8-5/8	1-1/8	5	5-11/16	11/16	20-5/16
<input type="checkbox"/> DS-12	13-1/4	12	10-1/2	12-1/2	10	22-1/2	13-7/16	14-1/16	6-7/8	18-3/8	10-11/16	1-1/8	6-1/32	7	1-1/16	24-9/16
<input type="checkbox"/> DS-13	14-9/16	13-1/4	11-1/2	13-3/4	11	24-3/4	15-7/16	15-3/8	7-7/16	22-11/16	11-3/4	1-1/8	6-9/16	7-11/16	1-1/16	26-7/8
<input type="checkbox"/> DS-15	16-3/16	14-5/8	12-3/4	15-1/4	12	27-1/4	16-9/16	17-5/16	8-1/16	26-1/4	13-1/4	1-1/2	7-3/8	8-9/16	1-1/4	30-1/16
<input type="checkbox"/> DS-16	17-13/16	16	14	16-3/4	13	29-3/4	18-9/16	18-15/16	8-3/4	28-3/8	14-3/8	1-1/2	8-1/16	9-3/8	1-7/16	32-15/16

3500 RPM PERFORMANCE DATA

Fan Size	STD Motor HP	Max BHP	1/2" SP		1" SP		1-1/2"		2" SP		2-1/2" SP		3" SP		3-1/2" SP		4" SP		4-1/2"	
			CFM	OV	CFM	OV	CFM	OV	CFM	OV	CFM	OV	CFM	OV	CFM	OV	CFM	OV	CFM	OV
<input type="checkbox"/> DS-8	3/4	0.54	1103	2451	1055	2344	1001	2224	936	2080	868	1929	795	1767	708	1573
<input type="checkbox"/> DS-10	1.0	0.97	1773	3005	1694	2871	1615	2737	1536	3603	1461	2476	1380	2339	1290	2186	1183	2055	1033	1751
<input type="checkbox"/> DS-12	5.0	3.14	3810	4330	3670	4170	3590	4080	3455	3926	3340	3795	3244	3689	3115	3540	2995	3403	2840	3227
<input type="checkbox"/> DS-13	7-1/2	5.11	5130	4794	4964	4639	4840	4523	4723	4414	4600	4299	4493	4199	4350	4065	4252	3974	4085	3818
<input type="checkbox"/> DS-15	10.0	8.7	7045	5337	6872	5206	6750	5114	6603	5002	6495	4920	6343	4805	6240	4727	6088	4612	5980	4530
<input type="checkbox"/> DS-16	15.0	14	9340	5874	9209	5792	9070	5704	8913	5606	8780	5522	8621	5422	8495	5343	8339	5245	8198	5156

Fan Size	5" SP		5-1/2" SP		6" SP		6-1/2" SP		7" SP		8" SP		9" SP		10" SP		11" SP		12" SP	
	CFM	OV	CFM	OV	CFM	OV	CFM	OV	CFM	OV	CFM	OV	CFM	OV	CFM	OV	CFM	OV	CFM	OV
<input type="checkbox"/> DS-12	2712	3082	2590	2943	2443	2776	2287	2599	2126	2416	1488	1691
<input type="checkbox"/> DS-13	3965	3706	3860	3607	3652	3413	3562	3329	3356	3136	3038	2839	2596	2426	1735	1621
<input type="checkbox"/> DS-15	5815	4405	5656	4285	5498	1465	5378	4074	5149	3901	4814	3647	4484	3397	4118	3120	3633	2752	2726	2065
<input type="checkbox"/> DS-16	8057	5067	7906	4972	7756	4878	7601	4781	7414	4663	7034	4424	6654	4185	6293	3958	5927	3728	5525	3475

Fan Size	13" SP		14" SP		15" SP		16" SP		17" SP		18" SP		19" SP		20" SP		21" SP		22" SP	
	CFM	OV	CFM	OV	CFM	OV	CFM	OV	CFM	OV	CFM	OV	CFM	OV	CFM	OV	CFM	OV	CFM	OV
<input type="checkbox"/> DS-16	5030	3164	4211	2648	3088	1942

*The future is clean air ... the future is **Sourcetec**®*

TECHNICAL DATA

ACCESSORIES

AMCA FAN SPECIFICATIONS

Fan Size	Drive Type	Wheel Type	Wheel Material *	Discharge Style	Housing Material	Housing Finish	Total Fan Weight (lbs)
<input type="checkbox"/> DS-8	Direct Drive	Backward Inclined	Steel	Rotational 90°	Steel	Epoxy	85
<input type="checkbox"/> DS-10	Direct Drive	Backward Inclined	Steel	Rotational 90°	Steel	Epoxy	90
<input type="checkbox"/> DS-12	Direct Drive	Backward Inclined	Steel	Rotational 90°	Steel	Epoxy	150
<input type="checkbox"/> DS-13	Direct Drive	Backward Inclined	Steel	Rotational 90°	Steel	Epoxy	200
<input type="checkbox"/> DS-15	Direct Drive	Backward Inclined	Steel	Rotational 90°	Steel	Epoxy	300
<input type="checkbox"/> DS-16	Direct Drive	Backward Inclined	Steel	Rotational 90°	Steel	Epoxy	350

* Optional: All fans can be equipped with an aluminum wheel to have AMCA B rating.*

MOTOR SPECIFICATIONS

Fan Size	Motor HP	Voltage/1/60				Voltage/3/60			Full Load Amp 1 Phase*			Full Load Amp 3 Phase*		
		115/208-230	208-230	208-230	575-600	115V	208V	230V	208V	230V	460V	575V		
<input type="checkbox"/> DS-8	3/4	❌		✅	✅	9.6	6.1	4.8	3.1	2.6	1.3	0.96		
<input type="checkbox"/> DS-10	1	❌		✅	✅	11.8	6.1	5.9	4.1	3.6	1.8	1.4		
<input type="checkbox"/> DS-12	5		❌	✅	✅			19.5	12.6	11.6	5.8	4.8		
<input type="checkbox"/> DS-13	7-1/2			✅	✅			33	1.8	17.4	8.7	7		
<input type="checkbox"/> DS-15	10			✅	✅			40	25	23	11.5	9.2		
<input type="checkbox"/> DS-16	15			✅	✅									

All models come with:



CSA



UL



Continuous Duty



Service Factor of 1.15

SOUND POWER DATA

Fan Size	OCTAVE BAND & CENTRE Hz								Approx dBA @ 10ft.
	1	2	3	4	5	6	7	8	
	63	125	750	500	1000	2000	4000	8000	
<input type="checkbox"/> DS-8	85	88	83	80	74	71	67	64	61
<input type="checkbox"/> DS-10	89	92	87	84	78	75	71	68	65
<input type="checkbox"/> DS-12	101	95	90	94	85	79	75	73	73
<input type="checkbox"/> DS-13	104	98	93	97	88	82	78	76	76
<input type="checkbox"/> DS-15	107	101	96	103	91	85	81	79	79
<input type="checkbox"/> DS-16	110	104	99	103	94	88	84	82	82



Ontario - CANADA- Ohio - USA
 Telephone : (905) 678-9333
 Facsimilie : (905) 678-7133
 Toll Free : 1 (800) 784-2383
 E-mail : sales@sourcetecindustries.com
 Website : www.sourcetecindustries.com

Distributed by:



Backdraft Dampers

Designed to prevent reverse flow of air when blower is not operation



Inlet & Outlet Screens

Designed to prevent entrance of birds and debris.



Vibration Isolator

Designed to provide even distribution of weight.