

# SOURCETEC

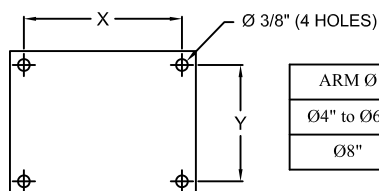
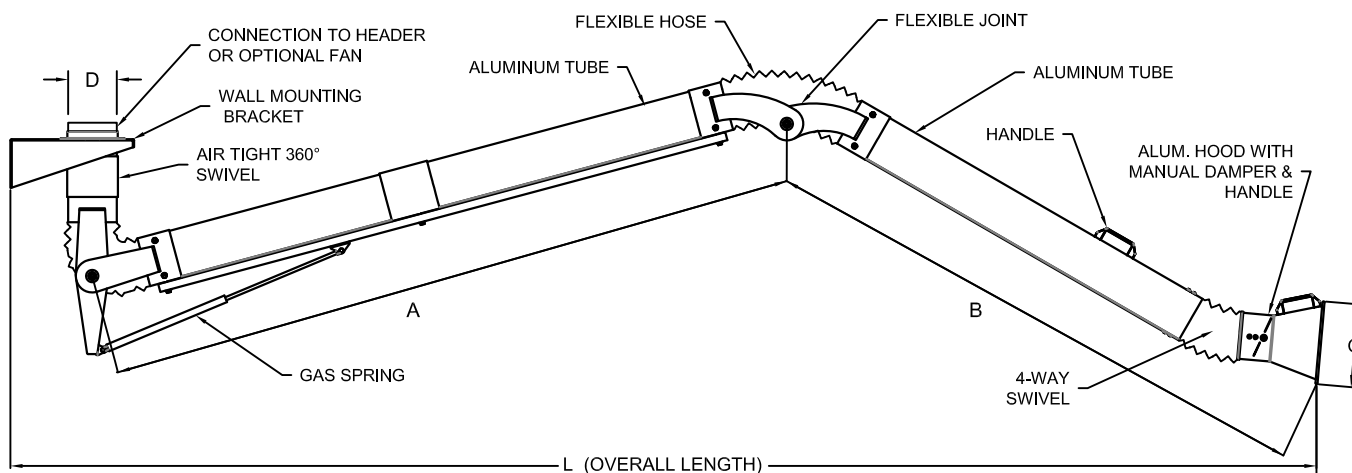
The future is clean air ... the future is **Sourcetek**

Mississauga, Ontario, Canada  
Tel: (905) 678-9333 Fax: (905) 678-7133  
Ohio, USA 1-800-784-2383

www.sourcetekindustries.com  
E-mail: sales@sourcetekindustries.com

PRODUCT	SERIAL	DRAWING NO.	DATE	PROJECT	
SOURCEARM	SWST	01032901 rev1	2016-07-08	LOCATION	
				ARCHITECT/ENG	
				CONTRACTOR	
				SALES ENG/DIST	
				DATE	

## SPARK RESISTANT SOURCEARM SERIES "SWST"



WALL MOUNTING BRACKET (CAN BE MODIFIED TO SUIT)

ARM Ø	X	Y
Ø4\" to Ø6\"	9\"	4\"
Ø8\"	11\"	5\"

"O" - HOOD OPENING + 1"  
(IS AN INLET FLANGE TO INCREASE  
CAPTURE EFFICIENCY)

HOSE DIA.	D	HOOD OPENING
4"	4"	6"
5"	5"	7"
6"	6"	9"
8"	8"	11"

MODEL	A	B	L
SWST 5x	20"	28"	5'
SWST 6x	26"	34"	6'
SWST 7x	35"	37"	7'
SWST 8x	43"	41"	8'
SWST 9x	49"	47"	9'
SWST 10x	55"	53"	10'
SWST 11x	61"	59"	11'
SWST 12x	67"	65"	12'
SWST 13x	74"	70"	13'
SWST 14x	86"	70"	14'

NOTE: All dimensions are approximate. For certified dimensions, call factory. The last digit of the Model no. represented by letter "x" stands for the hose dia.

Ex. SWST 54: L = 5' Hose Ø = 4"  
Ex. SWST 148: L = 14' Hose Ø = 8"

### NOTES:

#### CONSTRUCTION:

Bracket is 3/8" thick fully welded steel. Arm is externally supported using smooth Aluminum tubing section.

#### JOINTS:

Joints are unique and mounted externally to allow ease of adjustments. They are equipped with heavy duty PVC based flexible tube for extremely rough use with excellent flexibility and abrasion resistant characteristics. Flexible joints are attached to the tubing with gear clamps.

#### SWIVEL:

Air tight adjustable 360 degrees swivel.

#### FINISH:

Unit is powder coated with Sourcetek special coating for added protection.

#### HOOD:

Aluminum with manual locking damper, 4-way swivel, and 1/2" flange to increase intake flow efficiency.

#### AVAILABLE SIZES:

Diameter - 4", 5", 6", 8"  
Length - 5' up to 14'

Length can be modified to suit.

ITEM	QTY.	MODEL	DIA.	L	NOTES

We reserve the right to change specification and details without prior notice. This drawing is sole property of Sourcetek Industries Inc. Unauthorized duplication, distribution or use by third party is strictly prohibited.

FORM 3